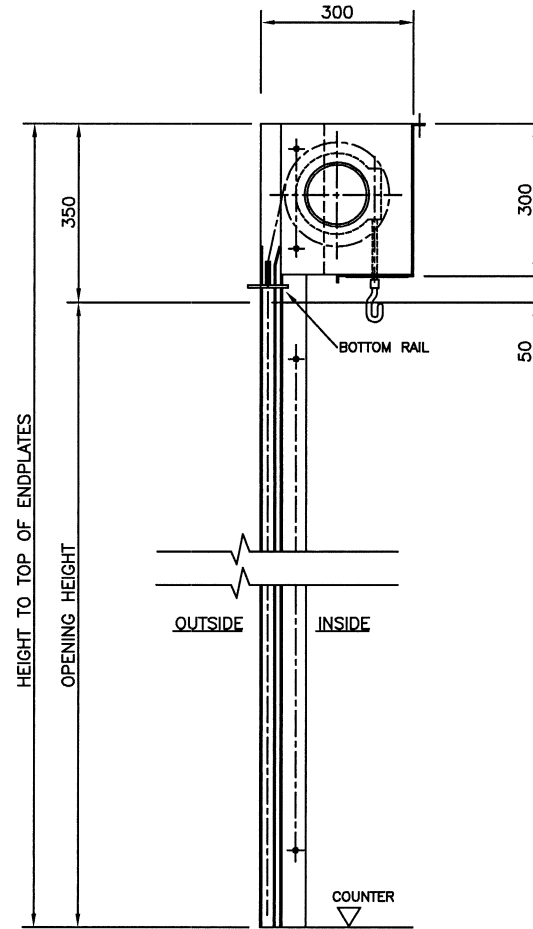


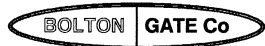
SECTIONAL PLAN



SECTION

NOTES

1. IT IS THE CLIENTS RESPONSIBILITY TO ENSURE THE STRUCTURE IS CAPABLE OF ACCEPTING THE FIXINGS SHOWN AND SUPPORTING THE DOOR / PRODUCT WEIGHT WHILST AT REST AND DURING OPERATION  
APPROX. DOOR WEIGHT = Kg
2. WE RECOMMEND THAT SUITABLE ACCESS ACROSS THE FULL WIDTH OF THE SHUTTER BE PROVIDED FOR MAINTENANCE / REPLACEMENT PURPOSES. BOLTON GATE CO. LTD. WILL NOT ACCEPT ANY COSTS WHATSOEVER ARISING FROM A FAILURE BY ANY PARTY TO ACT UPON THIS RECOMMENDATION.
3. ELECTRICAL OPERATION BY TUBULAR MOTOR TO SUIT A 240V 1PH SUPPLY CONNECTED TO A 13 AMP SOCKET TO BE POSITIONED WITHIN 1 METRE OF THE MOTOR BY OTHERS
4. OPERATION BY INTERNAL KEYSWITCH FITTED ON RH SIDE LOOKING FROM INSIDE
5. FLAG GUIDE ASSEMBLY
6. FIT COIL CASING
7. FIT EMERGENCY HAND CRANK MECH (NOTE: IF THE DOOR IS FITTED EXTERNALLY, AN ADDITIONAL LOCKING COVER TO THE HAND CRANK WILL BE REQUIRED, AND WILL BE SUBJECT TO AN ADDITIONAL COST)
8. STANDARD GALVANIZED FINISH



Bolton Gate Co. Limited  
 Waterloo Street  
 Bolton. BL1 2SP  
 Telephone: 01204 871000  
 Facsimile: 01204 871049

TITLE ARRANGEMENT OF No ELECTRICALLY OPERATED STEEL ROLLER SHUTTER DOOR(S) (TUBE MOTOR)

SITE

		C				F	DRAWN:	WORKS ORDER No
		B				E	DATE:	
		A				D	CHECKED:	DRAWING NUMBER
DATE	REVISION	REF	DATE	REVISION	REF	SCALE:	1:10	