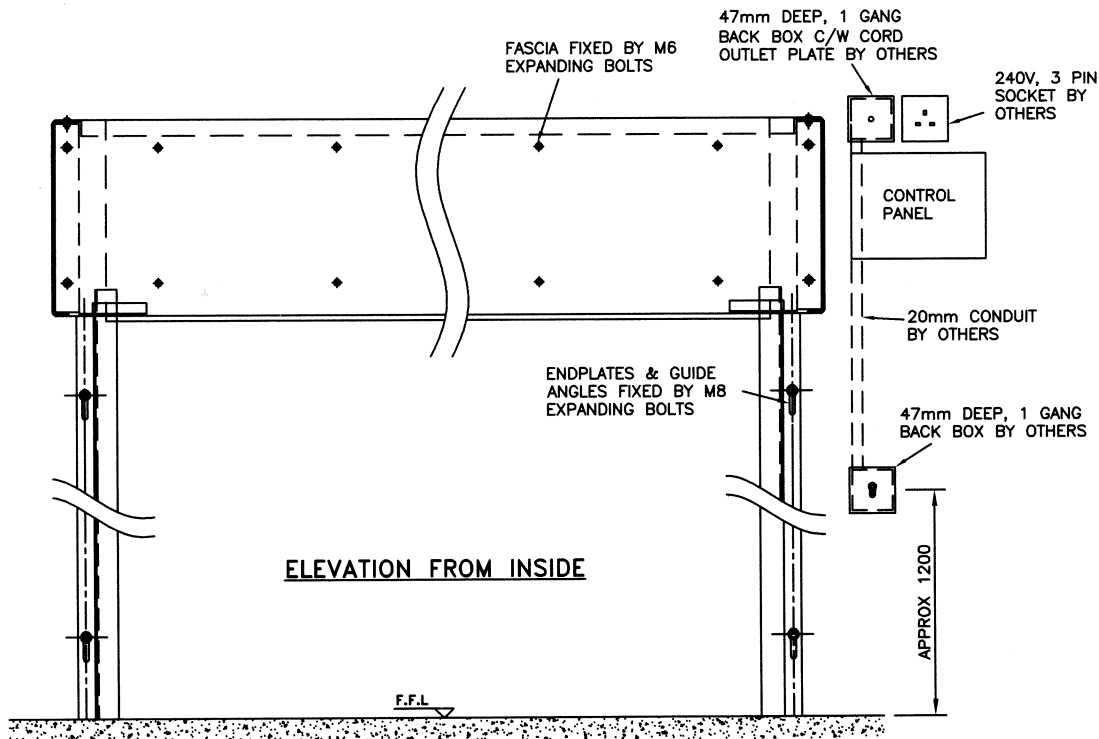


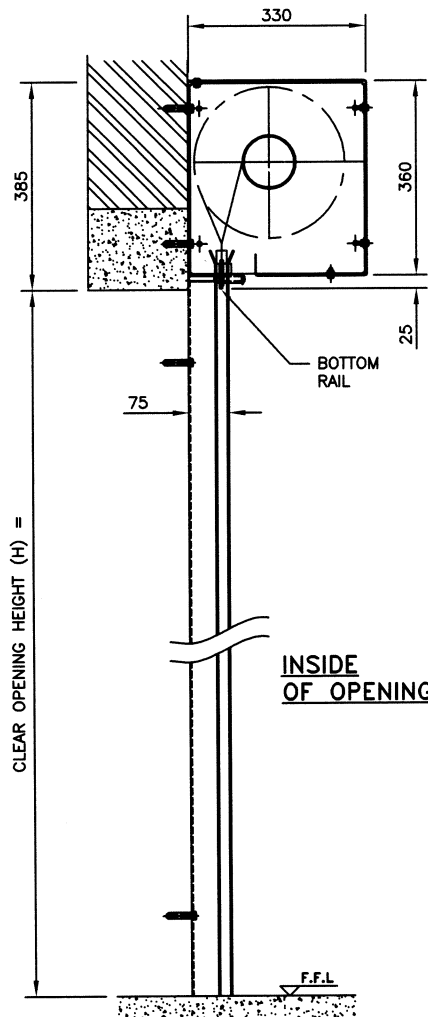
NOTES

1. IT IS THE CLIENTS RESPONSIBILITY TO ENSURE THE STRUCTURE IS CAPABLE OF ACCEPTING THE FIXINGS SHOWN AND ABLE TO SUPPORT THE WEIGHT OF THE DOOR WHETHER IT IS AT REST OR IN MOTION.
2. APPROX. DOOR WEIGHT =
3. WE RECOMMEND THAT SUITABLE ACCESS ACROSS THE FULL WIDTH OF THE SHUTTER BE PROVIDED FOR MAINTENANCE / REPLACEMENT PURPOSES. BOLTON GATE CO. LTD. WILL NOT ACCEPT ANY COSTS WHATSOEVER SO EVER ARISING FROM A FAILURE BY ANY PARTY TO ACT UPON THIS RECOMMENDATION.
4. ALL EXPOSED SUPPORTING STRUCTURES ARE TO BE PROTECTED; OR GAPS BETWEEN THE STRUCTURE AND THE SHUTTER EQUIPMENT CAUSED BY ANY UNEVENNESS OR DISCREPANCY IN THE OPENING ARE TO BE FILLED; BY OTHERS WITH, AS A MINIMUM FIRE RESISTANT MATERIALS OF EQUAL RATING TO THAT OF THE SHUTTER, FAILURE TO COMPLETE THIS WORK MAY INVALIDATE THE FIRE INTEGRITY OF THE SHUTTER.
5. ELECTRIC OPERATION 240 VOLT AC MOTOR. A 3 PIN SOCKET IS TO BE PROVIDED WITHIN 300mm OF MOTOR, BY OTHERS.
6. CONTROL PANEL INCORPORATING TEST FACILITY SWITCH.
7. FACILITY FOR CONNECTION TO THE FIRE ALARM. A NORMALLY CLOSED VOLT FREE CONTACT TO BE PROVIDED ON CLIENTS FIRE ALARM AND WIRED TO TERMINALS IN OUR CONTROL PANEL BY OTHERS.
8. UPON LOSS OF MAINS POWER THE DOOR WILL CLOSE.
9. KEYSWITCH c/w 2 KEYS.
10. FINISH:-

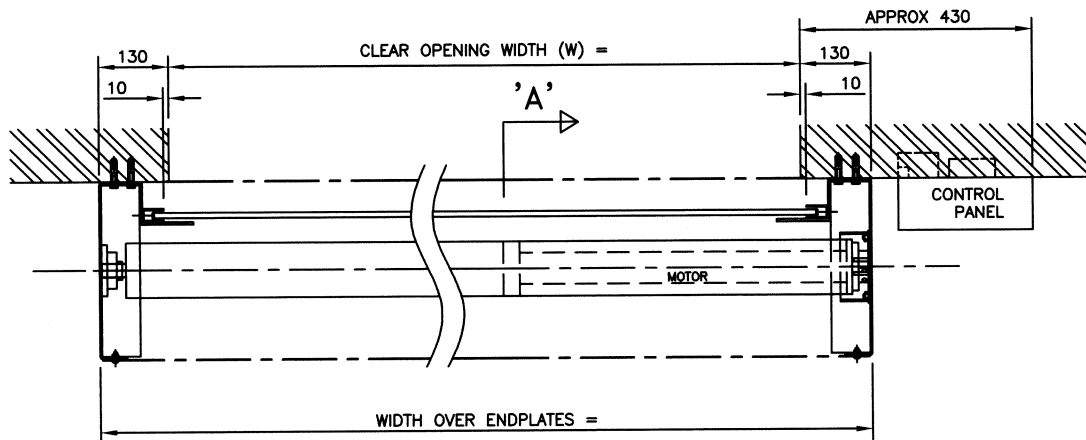
DOOR REF. No.



ELEVATION FROM INSIDE

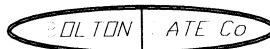


SECTION ON 'A'



INSIDE OF OPENING PLAN VIEW

NOTE: THIS DOOR MUST NOT BE INSTALLED OVER ESCAPE ROUTES

 <p>Bolton Gate Co. Limited Waterloo Street Bolton. BL1 2SP Telephone: 01204 871000 Facsimile: 01204 871049</p>	TITLE	ARRANGEMENT OF ELECTRICALLY OPERATED E30 / E60 FIRE RESISTING ROLLER SHUTTER				C		F	DRAWN:	WORKS ORDER No	
	SITE					B		E	DATE:		
	DATE	REVISION	CHK'D	REF	DATE	REVISION	CHK'D	REF	D	CHECKED:	DRAWING NUMBER
									D	SCALE:	
									1:10 (A3)		