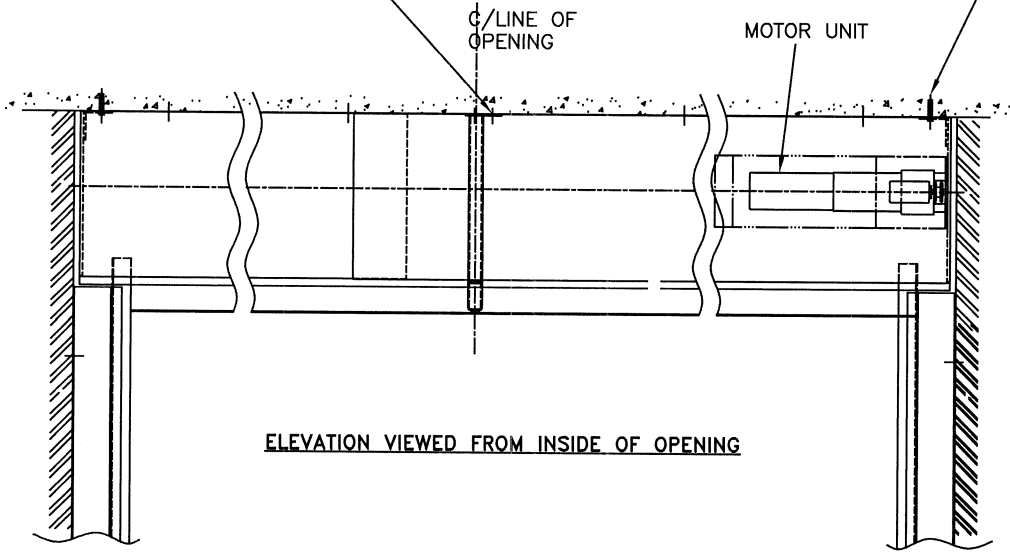
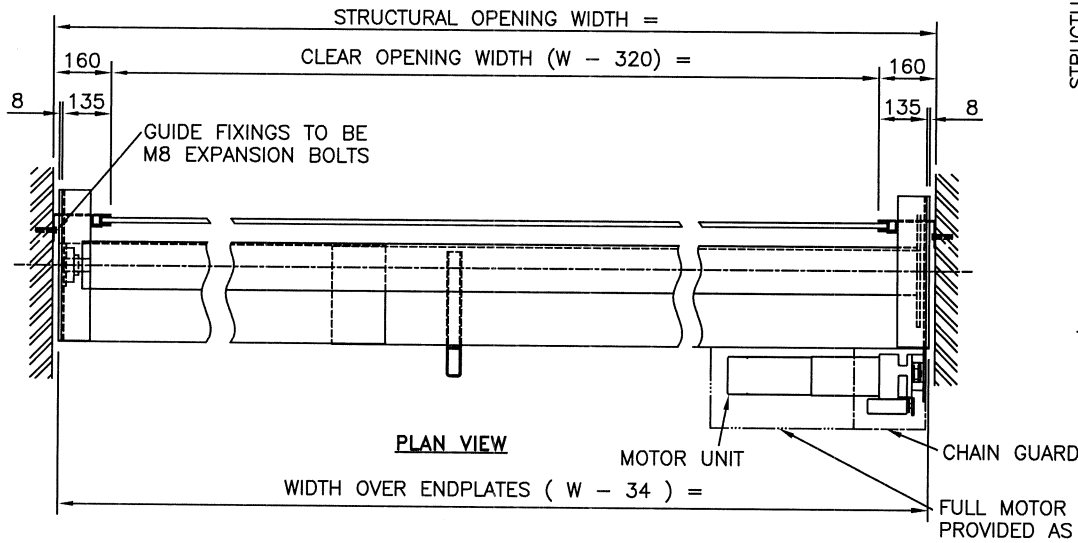


1 NO. CASING SUPPORT STRAP
POSITIONED CENTRAL ON THE
OPENING. FIXINGS TO BE M10
EXPANSION BOLTS

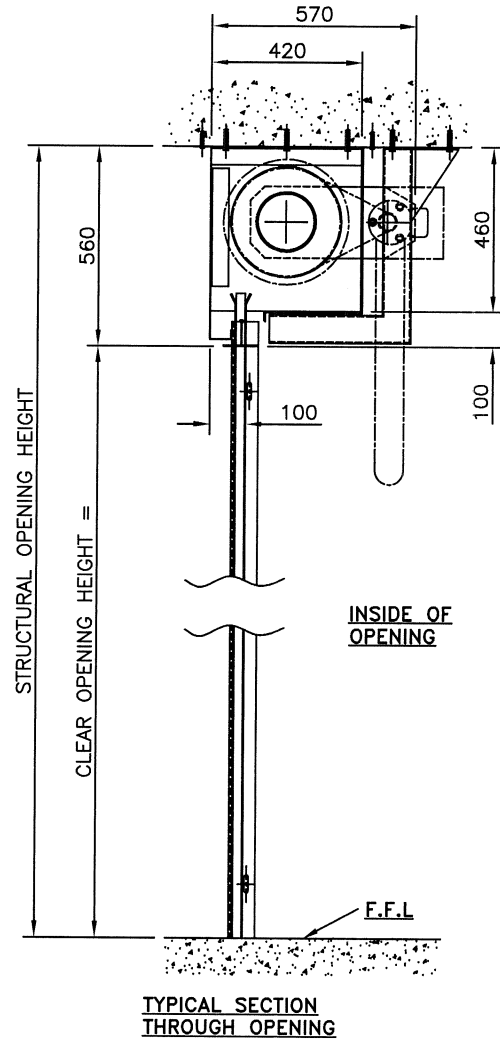
ENDPLATE FIXINGS TO BE
M10 EXPANSION BOLTS



ELEVATION VIEWED FROM INSIDE OF OPENING



PLAN VIEW



NOTES

1. IT IS THE CLIENTS RESPONSIBILITY TO
ENSURE THAT THE STRUCTURE IS CAPABLE
OF ACCEPTING THE FIXINGS SHOWN AND
SUPPORTING THE DOOR WEIGHT WHILST
AT REST AND DURING OPERATION.

APPROX. DOOR WEIGHT = _____ kg.

2. BOLTON GATE CO. LTD. RECOMMEND THAT
FULL ACCESS TO THE SHUTTER BOX BE
PROVIDED ACROSS THE OPENING, FOR
MAINTENANCE/REPLACEMENT PURPOSES.
IF FULL ACCESS IS NOT PROVIDED,
BOLTON GATE CO. LTD. WILL NOT ACCEPT
ANY CHARGES ASSOCIATED WITH THE
GAINING OF ACCESS, TO FACILITATE THE
MAINTENANCE OR REPLACEMENT OF ANY
SHUTTER COMPONENTS.

3. ALL EXPOSED SUPPORTING STEELWORK
MUST BE SUITABLY FIRE PROTECTED BY
OTHERS, AFTER THE INSTALLATION OF THE
SHUTTER. THE CLIENT MUST ALSO ENSURE
THE BACK FILLING OF ANY GAPS BETWEEN
THE DOOR AND THE OPENING STRUCTURE,
DUE TO UNEVEN OR OUT OF SQUARE
OPENINGS. MATERIAL EQUAL TO THE FIRE
RESISTANCE OF THE DOOR MUST BE USED.
FAILURE TO COMPLETE THIS WORK MAY
INVALIDATE THE FIRE INTEGRITY.

4. ELECTRICAL OPERATION:
CLIENT TO PROVIDE, PRIOR TO SHUTTER
DELIVERY, EITHER:
A 230V, SINGLE PHASE SUPPLY TERMINATING
AT AN IEC 60309-2, 16 AMP, 2 POLE AND
EARTH SOCKET WITHIN ONE METRE OF THE
MOTOR POSITION
OR
A 400V, 3 PHASE SUPPLY TERMINATING AT
AN IEC 60309-2, 16 AMP, 3 POLE, NEUTRAL
AND EARTH SOCKET WITHIN ONE METRE OF
THE MOTOR POSITION

BOLTON GATE Co

Bolton Gate Co. Limited
Waterloo Street
Bolton. BL1 2SP
Telephone: 01204 871000
Facsimile: 01204 871049
E-mail: general@boltongate.co.uk

TITLE
ARRANGEMENT FOR ELECTRICALLY OPERATED
4 HOUR FIRE RESISTING ROLLING SHUTTER

SITE

			C			F	DRAWN:	WORKS ORDER No
			B			E	DATE:	
			A			D	CHECKED:	DRAWING NUMBER
DATE	REVISION	REF	DATE	REVISION	REF	SCALE:	A3,1:15	