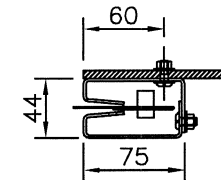
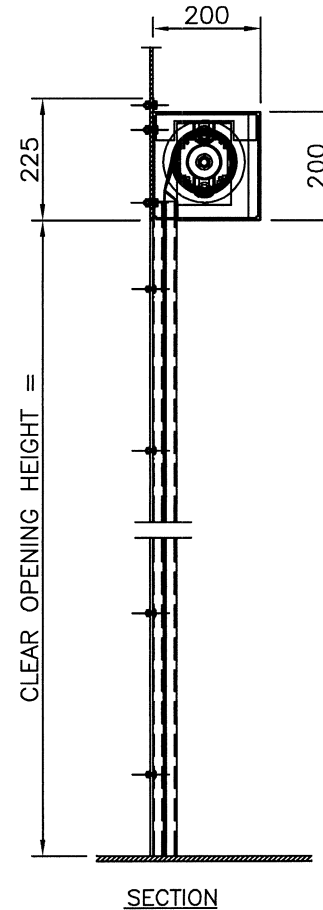
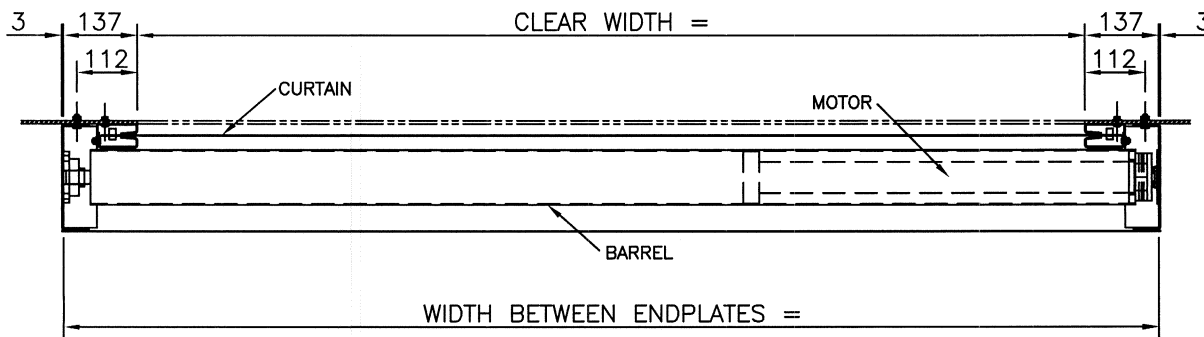
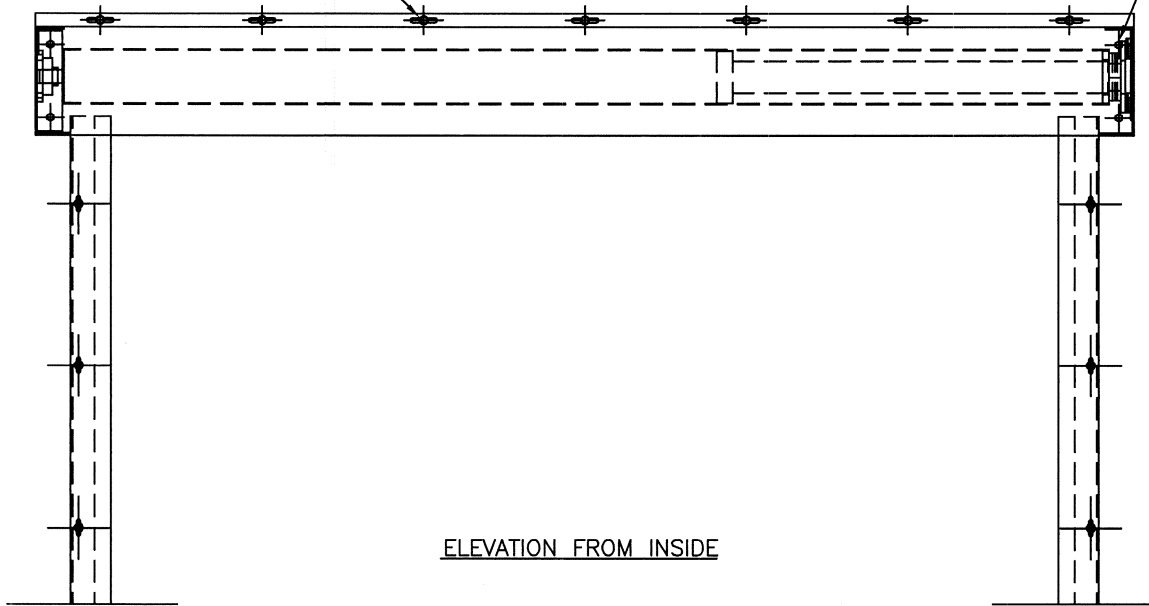


CASING FIXED TO BULKHEAD BY M8 SETSCREWS c/w FUSIBLE WASHERS

ENDPLATES FIXED TO BULKHEAD BY M8 SETSCREWS



**NOTES**

IT IS THE CLIENTS RESPONSIBILITY TO ENSURE THE STRUCTURE IS CAPABLE OF ACCEPTING THE FIXINGS SHOWN AND ABLE TO SUPPORT THE WEIGHT OF THE DOOR WHETHER IT IS AT REST OR IN MOTION.

APPROX. DOOR WEIGHT = \_\_\_\_\_ kg

WE RECOMMEND THAT SUITABLE ACCESS ACROSS THE FULL WIDTH OF THE SHUTTER BE PROVIDED FOR MAINTENANCE / REPLACEMENT PURPOSES. BOLTON GATE CO. LTD. WILL NOT ACCEPT ANY COSTS WHATSOEVER ARISING FROM A FAILURE BY ANY PARTY TO ACT UPON THIS RECOMMENDATION.

SUPPORTING STRUCTURES TO WHICH THE CURTAIN IS FITTED SHALL BE STIFFENED TO THE SATISFACTION OF THE RELEVANT MARINE SURVEYOR. EACH SHUTTER, ITS FRAME AND ASSOCIATED FITTINGS ARE TO BE CORRECTLY ALIGNED WHEN FITTED IN THE BULKHEAD.

ELECTRICAL EQUIPMENT IS BY WAY OF A 24 VOLT DC TUBE MOTOR WHICH IS SUITABLE FOR CONNECTION TO A 230 VOLT, 1 PHASE AND NEUTRAL 60HZ SUPPLY. POWER IS TO BE PROVIDED WITHIN 1 METRE OF MOTOR, BY OTHERS.



Bolton Gate Co. Limited  
 Waterloo Street  
 Bolton. BL1 2SP  
 Telephone: 01204 871000  
 Facsimile: 01204 871049

TITLE	ARRANGEMENT FOR 1 NO. ELECTRICALLY OPERATED AO FIRE CURTAIN C/W TUBE MOTOR					C				F	DRAWN:	WORKS ORDER No
SITE						B				E	DATE:	
						A				D	CHECKED:	DRAWING NUMBER
DATE	REVISION	CHK'D	REF	DATE	REVISION	CHK'D	REF	SCALE:	1:10 (A3)			