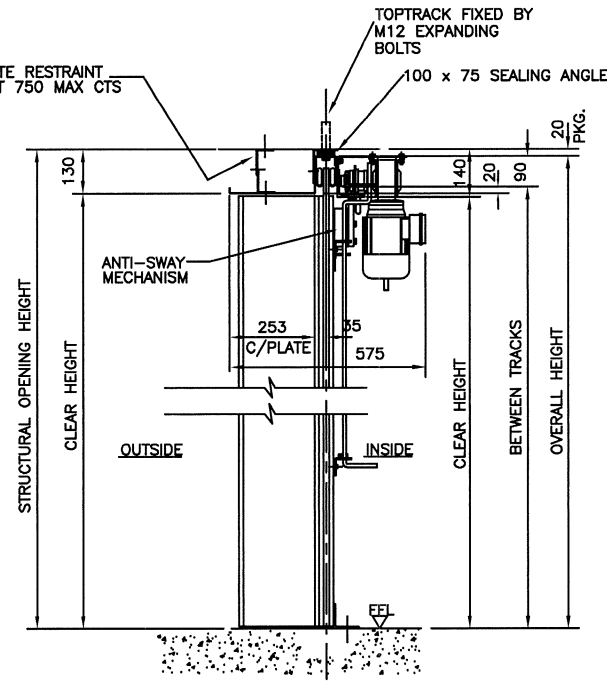
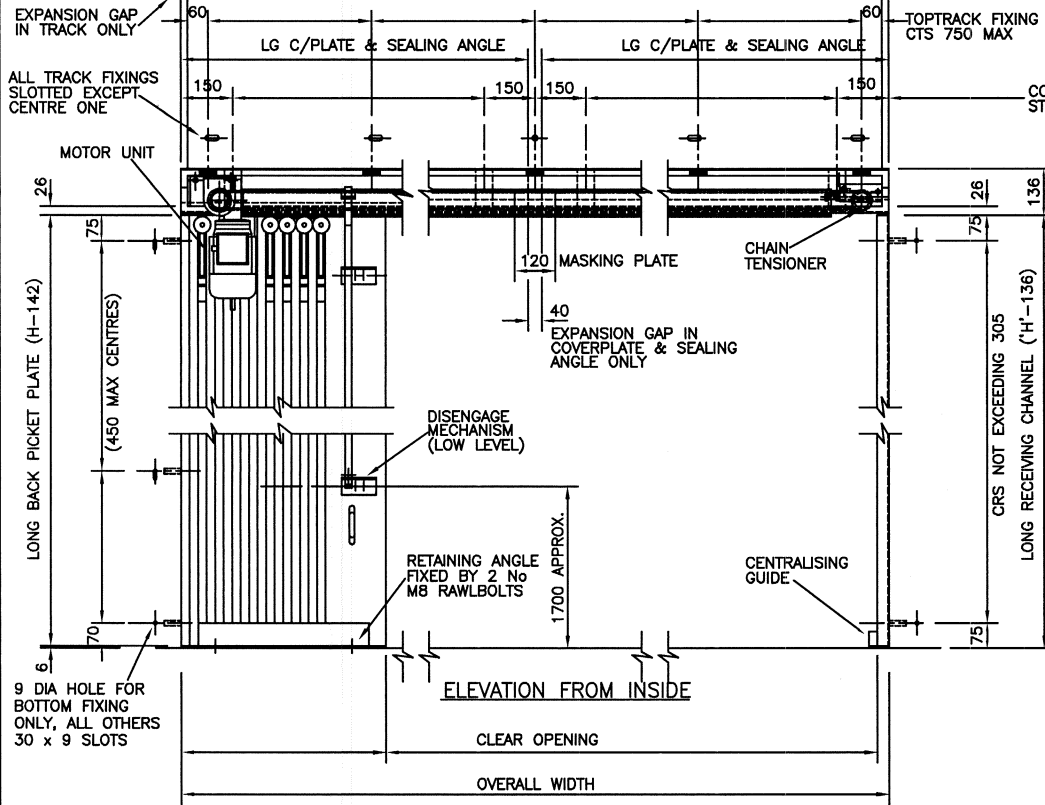
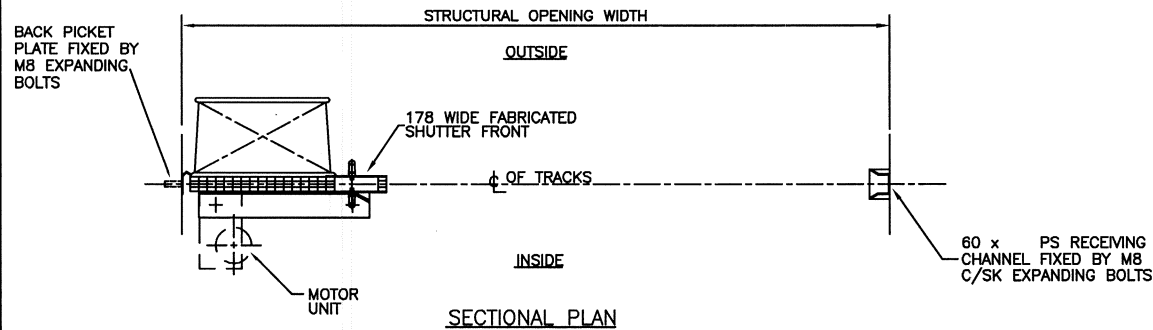


THIS DRAWING AND COPYRIGHT BELONG TO BOLTON GATE CO LTD. DO NOT COPY, REPRODUCE, LOAN OR SUPPLY INFORMATION FROM THIS DRAWING WITHOUT BOLTON GATE CO LTD AUTHORISATION © BOLTON GATE CO LTD.



SECTION



- NOTES**
- STRUCTURAL**
IT IS THE CLIENTS RESPONSIBILITY TO ENSURE THAT THE STRUCTURE IS CAPABLE OF ACCEPTING THE FIXINGS SHOWN AND SUPPORTING THE DOOR/PRODUCT WEIGHT WHILST AT REST AND DURING OPERATION
APPROX DOOR WEIGHT = _____ Kg.
 - ELECTRICAL SUPPLY**
415V 3PH + NEUTRAL 50HZ 10A SUPPLY - CLIENT TO PROVIDE A LOCKABLE ISOLATOR WITHIN 1 METRE OF THE MOTOR POSITION
 - DISCONNECT MECHANISM**
LOW LEVEL OPERATION
 - ANTI-SWAY MECHANISM**
NO BOTTOM TRACK
 - FINISH**
STANDARD GALVANIZED



Bolton Gate Co. Limited
Waterloo Street
Bolton. BL1 2SP
Telephone: 01204 871000
Facsimile: 01204 871049

TITLE ARRANGEMENT FOR A SINGLE (RH) FIRE RESISTING ELECT. OPERATED EUROFOLD DOOR, c/w ANTI-SWAY MECHANISM (NO BOTTOM TRACK)
SITE

		C			F	DRAWN:	WORKS ORDER No
		B			E	DATE:	
		A			D	CHECKED:	DRAWING NUMBER
DATE	REVISION	REF	DATE	REVISION	REF	SCALE: 1:15	