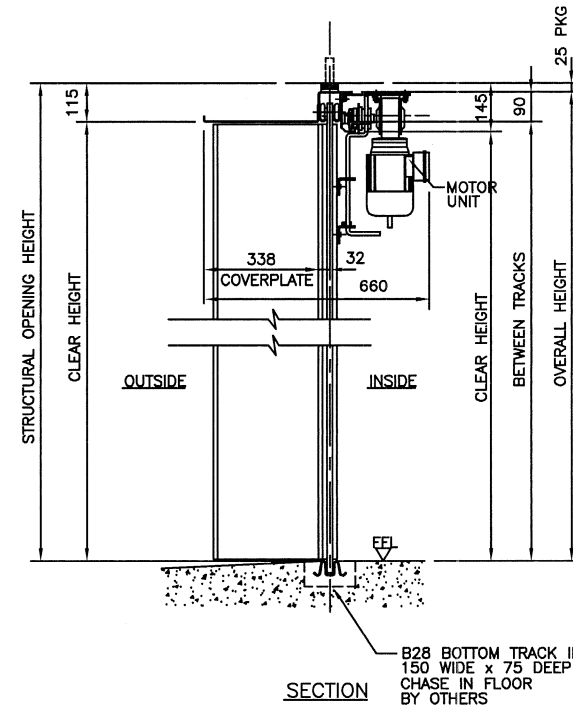
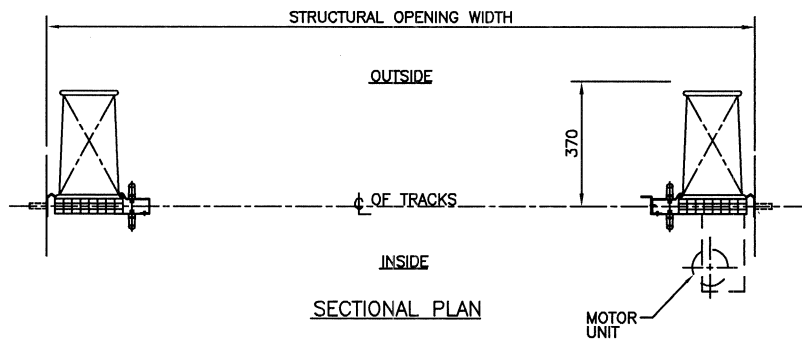
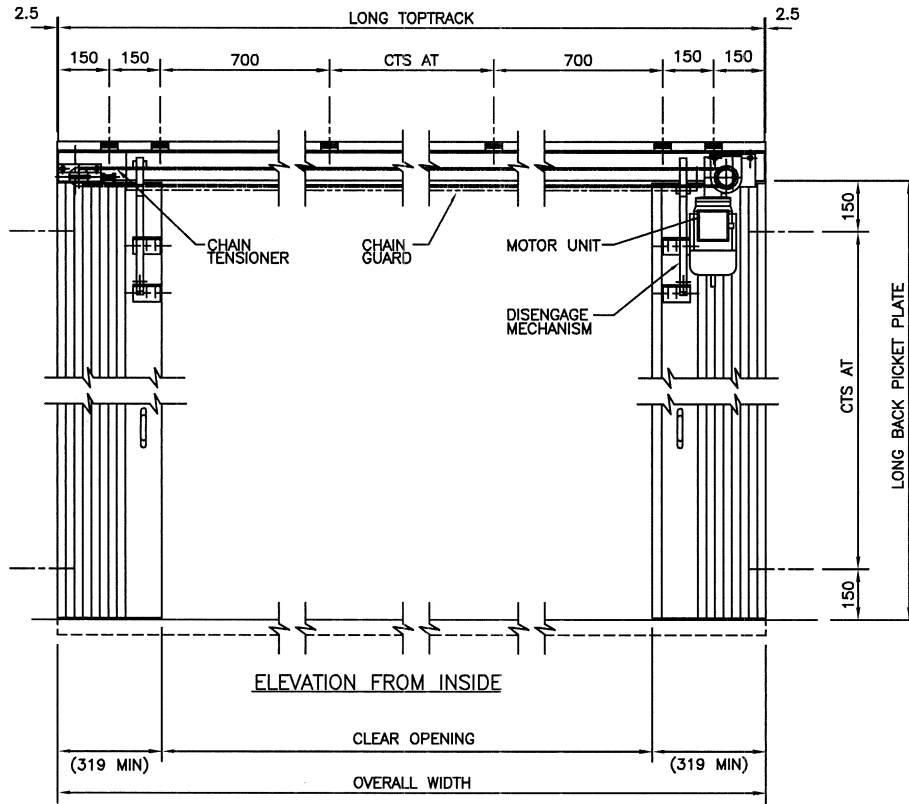
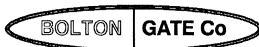


THIS DRAWING AND COPYRIGHT BELONG TO BOLTON GATE CO LTD. DO NOT COPY, REPRODUCE, LOAN OR SUPPLY INFORMATION FROM THIS DRAWING WITHOUT BOLTON GATE CO LTD AUTHORISATION c BOLTON GATE CO LTD



NOTES

1. **STRUCTURAL**
IT IS THE CLIENTS RESPONSIBILITY TO ENSURE THAT THE STRUCTURE IS CAPABLE OF ACCEPTING THE FIXINGS SHOWN AND SUPPORTING THE DOOR/PRODUCT WEIGHT WHILST AT REST AND DURING OPERATION
APPROX DOOR WEIGHT = Kg
2. **BUILDERS WORK**
CLIENT TO PROVIDE 150 WIDE x 75 DEEP CHASE IN FLOOR FOR BOTTOM TRACK & MAKE GOOD AFTER INSTALLATION
3. **ELECTRICAL SUPPLY**
415V 3PH + NEUTRAL 50HZ 10A SUPPLY - CLIENT TO PROVIDE A LOCKABLE ISOLATOR WITHIN 1 METRE OF THE MOTOR POSITION
4. **LOCKING**
DEADLOCK C/W 2 KEYS
5. **FINISH**
STANDARD GALVANIZED



Bolton Gate Co. Limited
Waterloo Street
Bolton. BL1 2SP
Telephone: 01204 871000
Facsimile: 01204 871049

TITLE ARRANGEMENT OF No PAIR(S) OF ELECTRICALLY OPERATED EUROFOLD SHUTTER DOORS (305mm LEAVES)

SITE

		C			F	DRAWN:	WORKS ORDER No
		B			E	DATE:	
		A			D	CHECKED:	DRAWING NUMBER
DATE	REVISION	REF	DATE	REVISION	REF	SCALE:	1:15