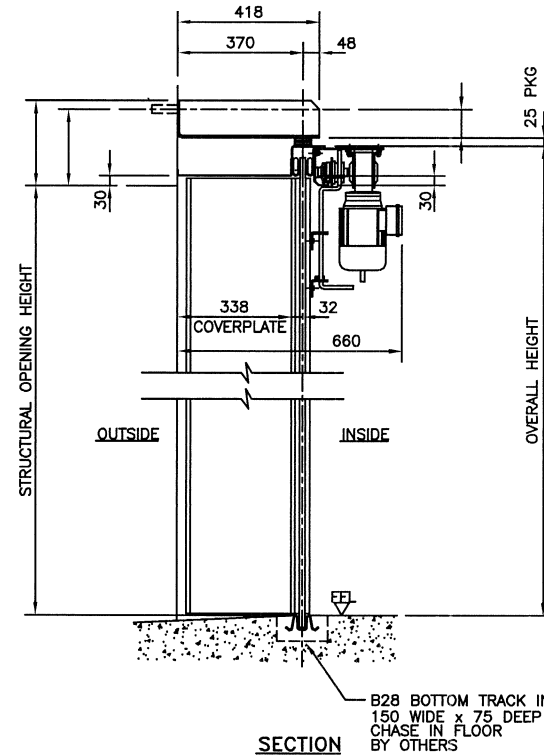
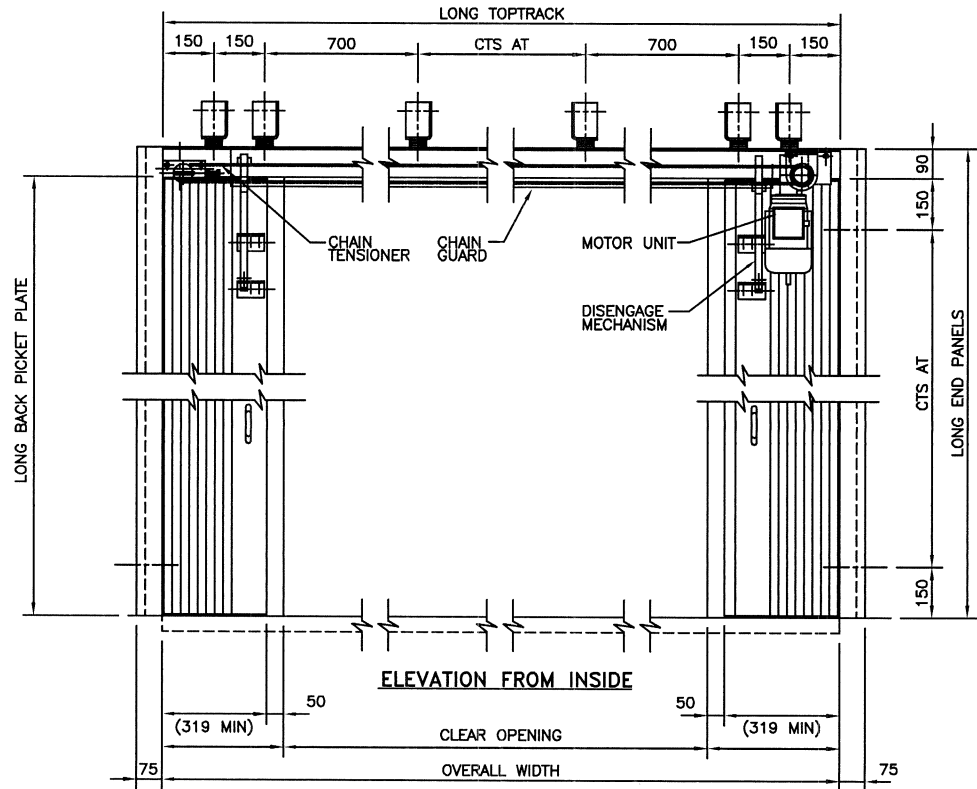
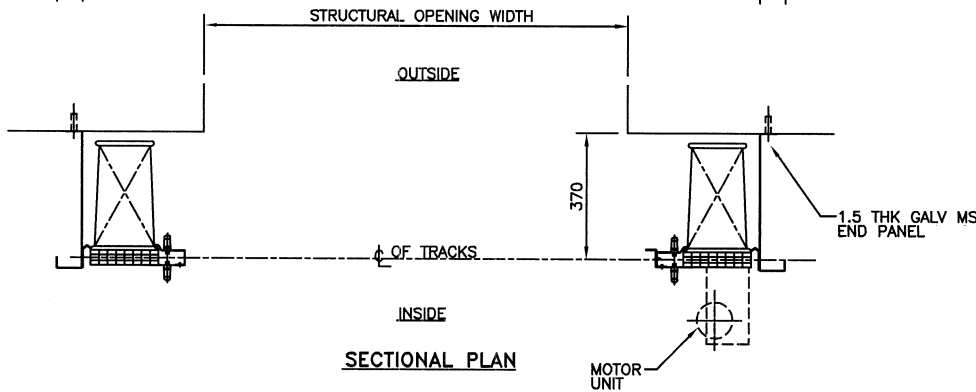


THIS DRAWING AND COPYRIGHT BELONG TO BOLTON GATE CO LTD. DO NOT COPY, REPRODUCE, LOAN OR SUPPLY INFORMATION FROM THIS DRAWING WITHOUT BOLTON GATE CO LTD AUTHORISATION c BOLTON GATE CO LTD



- NOTES**
- STRUCTURAL**  
IT IS THE CLIENTS RESPONSIBILITY TO ENSURE THAT THE STRUCTURE IS CAPABLE OF ACCEPTING THE FIXINGS SHOWN AND SUPPORTING THE DOOR/PRODUCT WEIGHT WHILST AT REST AND DURING OPERATION  
APPROX DOOR WEIGHT = \_\_\_\_\_ Kg
  - BUILDERS WORK**  
CLIENT TO PROVIDE 150 WIDE x 75 DEEP CHASE IN FLOOR FOR BOTTOM TRACK & MAKE GOOD AFTER INSTALLATION
  - ELECTRICAL SUPPLY**  
415V 3PH + NEUTRAL 50HZ 10A SUPPLY - CLIENT TO PROVIDE A LOCKABLE ISOLATOR WITHIN 1 METRE OF THE MOTOR POSITION
  - LOCKING**  
DEADLOCK C/W 2 KEYS
  - FINISH**  
STANDARD GALVANIZED



Bolton Gate Co. Limited  
Waterloo Street  
Bolton. BL1 2SP  
Telephone: 01204 871000  
Facsimile: 01204 871049

|       |  |
|-------|--|
| TITLE | ARRANGEMENT OF No PAIR(S) OF ELECTRICALLY OPERATED EUROFOLD SHUTTER DOORS (305mm LEAVES) |
| SITE  |  |

|      |          |     |      |          |     |          |                |
|------|----------|-----|------|----------|-----|----------|----------------|
| DATE | REVISION | REF | DATE | REVISION | F   | DRAWN:   | WORKS ORDER No |
|      |          | C   |      |          | E   | DATE:    |                |
|      |          | B   |      |          | D   | CHECKED: | DRAWING NUMBER |
|      |          | A   |      |          | REF | SCALE:   |                |
|      |          |     |      |          |     | 1:15     |                |