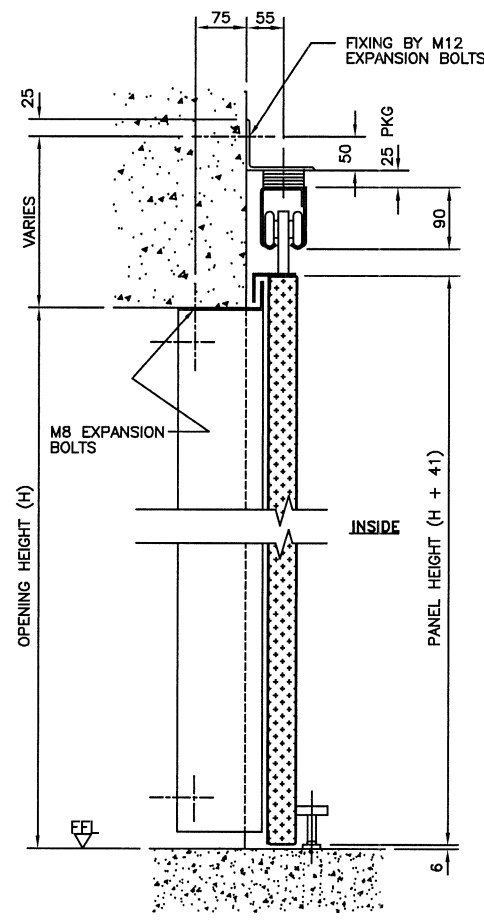
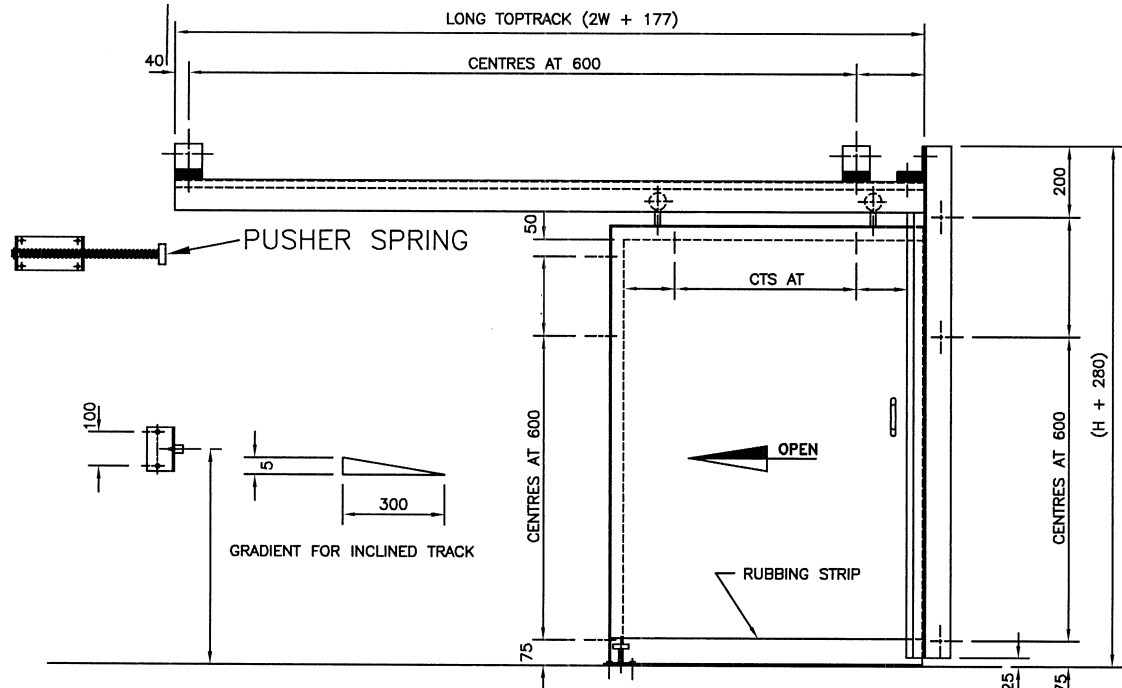


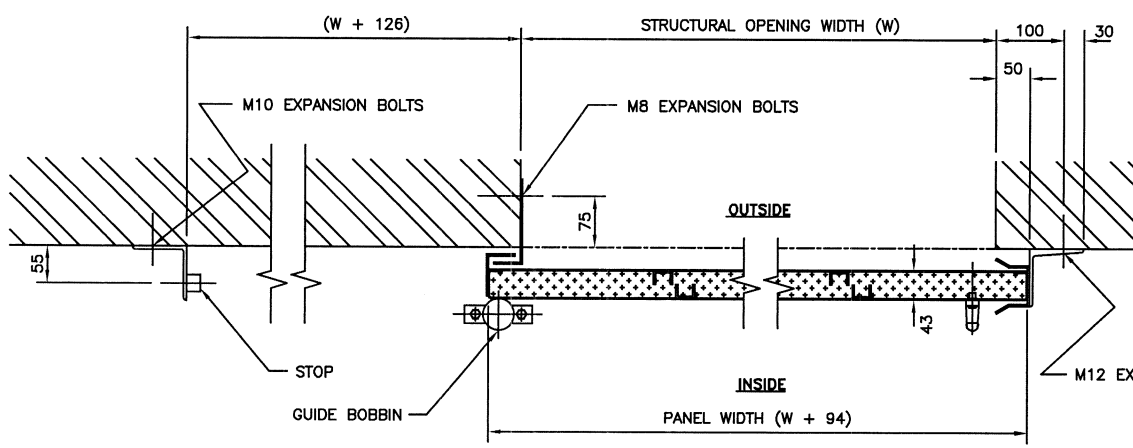
THIS DRAWING AND COPYRIGHT BELONG TO BOLTON GATE CO LTD. DO NOT COPY, REPRODUCE, LOAN OR SUPPLY INFORMATION FROM THIS DRAWING WITHOUT BOLTON GATE CO LTD AUTHORISATION c BOLTON GATE CO LTD



**SPECIFICATION**

**STRUCTURAL :**  
IT IS THE CLIENTS RESPONSIBILITY TO ENSURE THAT THE STRUCTURE IS CAPABLE OF ACCEPTING THE FIXINGS SHOWN AND SUPPORTING THE DOOR/PRODUCT WEIGHT WHILST AT REST & DURING OPERATION

**DOOR CONSTRUCTION**  
43mm THK DOOR PANELS FROM 1.5mm THK PS GALV SKINS WITH ROCKWOOL INFILL & INTERNAL STIFFENERS



BG REF	CLIENTS REF	HAND	LOCATION



Bolton Gate Co. Limited  
Waterloo Street  
Bolton. BL1 2SP  
Telephone: 01204 871000  
Facsimile: 01204 871049

TITLE ARRANGEMENT OF No COMPOSITE MK III SLIDING DOORS

SITE

DATE	REVISION	REF	DATE	REVISION	REF	SCALE: N.T.S.	WORKS ORDER No	DRAWING NUMBER
		C			F	DRAWN:		
		B			E	DATE:		
		A			D	CHECKED:		