

PUNCHED LATH ROLLER SHUTTERS

Bolton Gate Punched Lath Roller Shutters are an ideal method of securing openings such as shopfronts, servery counters, reception desks and bars whilst maintaining through vision for advertising purposes. An attractive close fitting flat lath curtain together with a neat and unobtrusive tubular motor drive system allow Punched Lath Roller Shutters to present an aesthetic and cost effective solution to securing various types of opening.

Bolton Gate Punched Lath Roller Shutters are custom made in our UK factories and are backed up by the Company's ISO 9001 Quality System and have been supplied on many prestigious projects.

STANDARD SPECIFICATION

Curtain

Shutter curtains are constructed from 51mm flat continuously interlocked galvanised steel laths with rectangular holes punched at centres and securely held in place by end locks. Bottom rails are galvanised and can be double or single angle.

Guides

Vertical guides are formed from rolled steel channels and are supplied with suitable angles for fixing to the structure.

Endplates

Prime painted mild steel of appropriate thickness relative to door size and supplied with angles for fixing to the structure.

Barrel

The barrel is constructed from seamless steel tube of adequate diameter to resist deflection and held in bearings or cups attached to the endplates.

Finish

Generally galvanised with non-galvanised parts prime painted. Polyester powder coating is available at extra cost.

MAXIMUM SIZES

4 metres wide x 3 metres high

ELECTRIC OPERATION

Electrical operation is by means of a single phase tubular



motor. A safety brake is fitted to all shutters where personnel could pass underneath thus meeting all relevant Health & Safety requirements. The client should provide a fused spur within 500mm of the motor position.

The standard method of control is by means of internal wall-mounted rocker switch. Other types of control including keyswitches and group controls are available at extra cost.

WEIGHT

Dependant upon size and lath configuration but typically 25kgs per m².

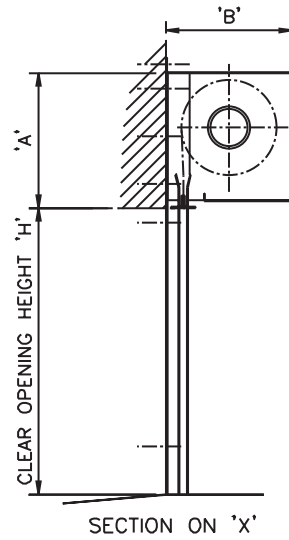
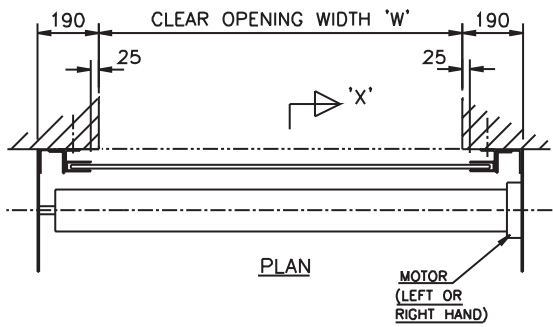
OPTIONS

- Keyswitches
- Radio remote control
- Photocells
- Timer closing
- Polyester powder coated finish
- Hoods
- Fascias

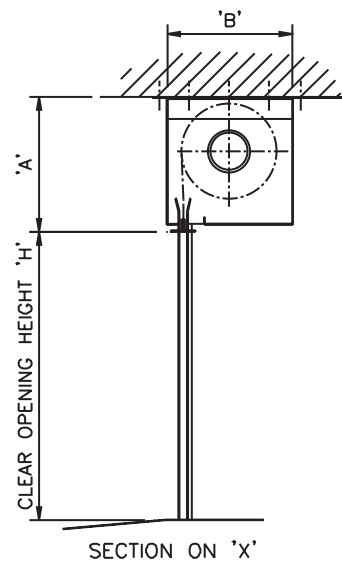
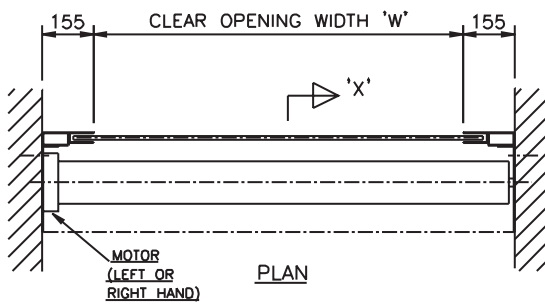
PUNCHED LATH ROLLER SHUTTERS

ELECTRIC (TUBE MOTOR)

FACE FIXED



BETWEEN FIXED



HEIGHT	ENDPLATE SIZE	
	'A'	'B'
2900	300	300
3600	350	350
4000	400	400
5000	450	450