

PERFORATED LATH ROLLER SHUTTERS

Bolton Gate Perforated Lath Roller Shutters are an ideal method of securing premises such as shopfronts whilst maintaining the see-through aspect when the shop is backlit. Used extensively in shopping malls and high street retail premises, perforated lath roller shutters present a most economical method of providing a secure closure to large or small openings.

The shutters are robust and have a long life with little maintenance required.

Bolton Gate Perforated Lath Roller Shutters have been supplied on many prestigious projects worldwide and come with the technical design and back up for which the Company is renowned. Shutters can be supplied as standard up to 7000mm wide.

STANDARD SPECIFICATION

Curtain

Shutter curtains are constructed from continuously interlocked galvanised perforated steel laths, securely held in place by end locks. Both 51mm flat and 76mm curved profiles are available dependent upon size. Bottom rails are galvanised and roll-formed into a tee section.

Guides

Vertical guides are formed from rolled steel and are supplied with suitable angles for fixing to the structure.

Endplates

Prime painted mild steel of appropriate thickness relative to door size and supplied with angles for fixing to the structure.

Barrel

The barrel is constructed from seamless steel tube of adequate diameter to resist deflection and held in bearings or cups attached to the endplates.

Finish

Generally galvanised with non-galvanised parts prime painted.

MAXIMUM SIZES

7 metres wide x 4 metres high.

ELECTRIC OPERATION

Electrical operation is by means of a single or three-phase tubular motor. A safety brake is fitted to all shutters where personnel could pass underneath thus meeting all relevant Health and Safety requirements. The client should provide a



fused spur within 500mm of the motor position.

The standard method of control is by means of internal wall-mounted rocker switch. Other types of control including keyswitches and group controls are available at extra cost.

WEIGHT

Dependant upon size and lath configuration but typically 30kgs per m².

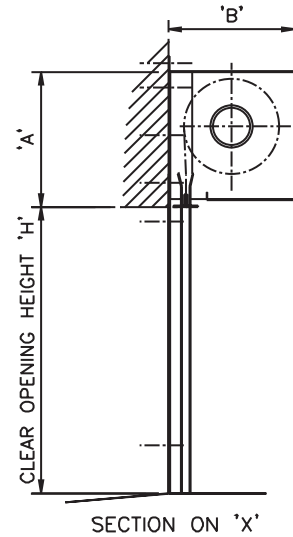
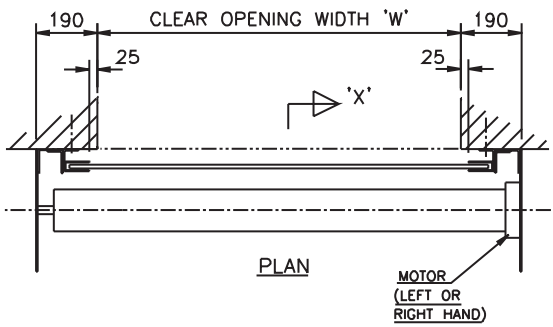
OPTIONS

- Keyswitches
- Radio remote control
- Photocells
- Timer closing
- Polyester powder coated finish
- Hoods
- Fascias

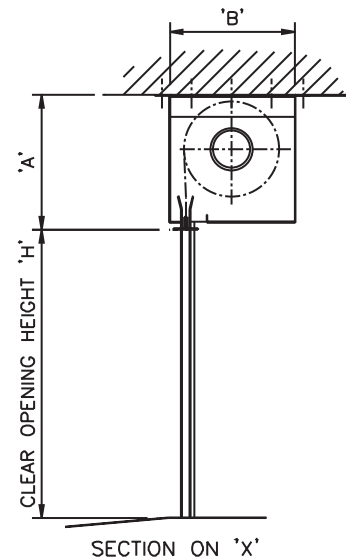
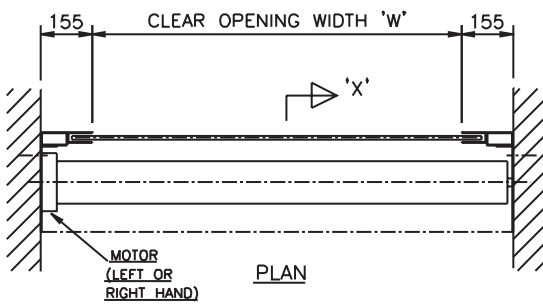
PERFORATED LATH ROLLER SHUTTERS

ELECTRIC (TUBE MOTOR)

FACE FIXED



BETWEEN FIXED



HEIGHT	ENDPLATE SIZE	
	'A'	'B'
2900	300	300
3600	350	350
4000	400	400
5000	450	450