

## **FIREROLL VR60**

### Insulated Rolling Fire Shutters

**B**olton Gate Company, the acknowledged leader in the field of rolling fire door technology, introduces Fireroll VR60, a revolutionary product designed to provide 60/60 minutes fire protection between individual compartments. The door has been successfully tested to EN 1634-1 for one hour integrity and insulation.

Up to the present time, the insulation requirement of a fire door was only met by unsightly hinged or sliding products with thick panels and the disadvantage of their associated space requirements. Due to the unique design of the Fireroll VR60, the product has all the advantages of a rolling fire product which can be stored above the false ceiling whilst meeting the requirements of both integrity and insulation in line with the latest building regulations.

Powered by an AC motor under normal circumstances, an auxiliary DC motor ensures that the door closes even in the event of mains failure.

#### **GENERAL SPECIFICATION**

##### **Curtain**

The curtain is constructed from 63 x 36mm laths comprising a synthetic material outer skin bonded to a special inner core consisting of high performance insulation materials.

Stainless steel cables connect the laths together and are fastened to the roller at the head.

The bottom rail comprises a standard lath fitted with an extruded PVC bottom seal.

##### **Guides**

Manufactured from galvanized steel and formed into a channel profile which is prepared for bolting to the structure by means of continuous fixing angles.

##### **Head**

A combination of galvanized steel "u" profile and MDF board with a special fire protection cover is fixed to the lintel into which the top of the door engages providing an effective seal against the passage of flames and hot gases.

##### **End brackets**

Fabricated from galvanized steel of adequate thickness relative to door size and supplied with steel plates for fixing to the structure.

##### **Roller**

The roller comprises a steel tube of adequate diameter and wall



thickness to resist deflection. Steel shafts and discs are inserted at each end and the whole assembly is supported at each end on the end brackets.

#### **OPERATION**

Under normal circumstances, the door is electrically operated using a 400 volt three phase geared motor mounted at one end. In a fire condition, an auxiliary 24 volt DC motor ensures that the door closes even if the mains supply fails. A control panel is mounted at high level which has an inbuilt facility for an incoming fire signal and incorporates the batteries necessary to operate the auxiliary motor.

A low level keyswitch is supplied for everyday use.

#### **FINISH**

The curtain is self finished in grey or red with the perimeter intumescent seal in black.

#### **WEIGHT**

Approximately 50 kgs per square metre.

#### **MAXIMUM SIZES**

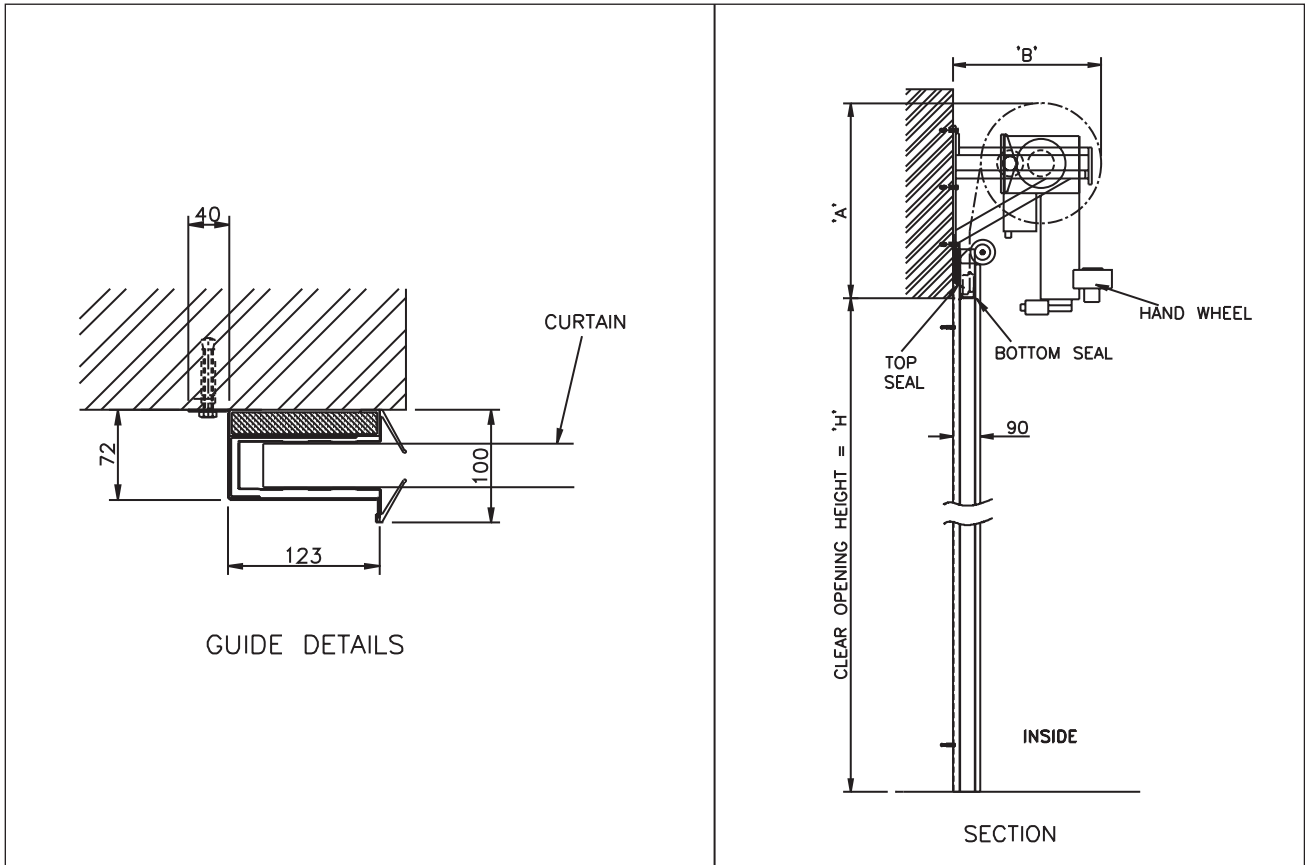
6 metres wide x 4 metres high

#### **OPERATING SPEED**

Approximately 100mm per second

# FIREROLL VR60

## Insulated Rolling Fire Shutters



CLEAR HEIGHT (H)	'A'	'B'
2750	620	480
4000	660	590
5250	700	670
6500	740	770

