

Bolton Gate Company's range of Fireroll E60 roller shutters is designed to provide compartmentation for smaller openings where its attractive close-fitting lath curtain makes it eminently suitable for all applications but particularly servery type openings or where aesthetic appearance is paramount.

Fireroll E60 has been extensively tested to EN 1634-1 for fire resistance and is rated E30-C2 in accordance with EN13501, EN13241, EN16034 & EN15269.

Additionally, the shutter has been successfully rated to E60 when fixed to flexible structures in accordance with EN15269-10 Clause J.1.2.

The product is CE marked accordingly.

The shutter is electrically operated as standard with controlled descent gravity failsafe closure thus avoiding any potential Health & Safety risks associated with manual shutters whose closing mechanism incorporates a drop bar system.

### STANDARD SPECIFICATION

#### **Operation**

The Speedsafe drive unit has a 230-volt nominal single-phase geared induction motor with an electromagnetic brake, limit switches, release unit, a built-in starter panel and low-level push button station with emergency stop button.

The design provides a fail-safe system which will close the shutter automatically in the event of a fire situation.

Activation is via a signal from the fire alarm system to an auto reset solenoid which, when activated, releases the motor brake allowing the shutter to close by gravity with a controlled descent.

A safety brake is supplied to comply with the safeguarding requirements of EN12604.

Manual operation in the event of a power loss is achieved by releasing a pull cord to close the shutter under controlled descent and a hand chain to open.

#### **Curtain**

The shutter curtain is constructed from continuously interlocking 51mm flat faced laths securely held in place by endlocks.

#### **Bottom Rail**

The bottom rail is also formed from a reinforced lath to give uniformity of appearance.

#### **Sides Guides**

Vertical guides are fabricated from cold rolled galvanised steel channels 50 x 25mm which are attached to the supporting structure.



#### **Roller**

The roller is made from seamless steel tube of sufficient diameter and wall thickness to resist deflection and is supported in bearings mounted on each endplate

#### **Endplates**

Fabricated from steel plate and prepared to accept the coil casing. Securely bolted to steel angles which are drilled for attachment to the structure at the correct centres.

#### **Coil Casing**

Coil and motor casings are constructed from galvanised steel and cover all moving parts at high level.

#### **Finish**

Fireroll E60 is supplied with most parts galvanised as standard. Where non-galvanised parts are utilised, these are finished with one coat of primer paint.

#### **MAXIMUM SIZES**

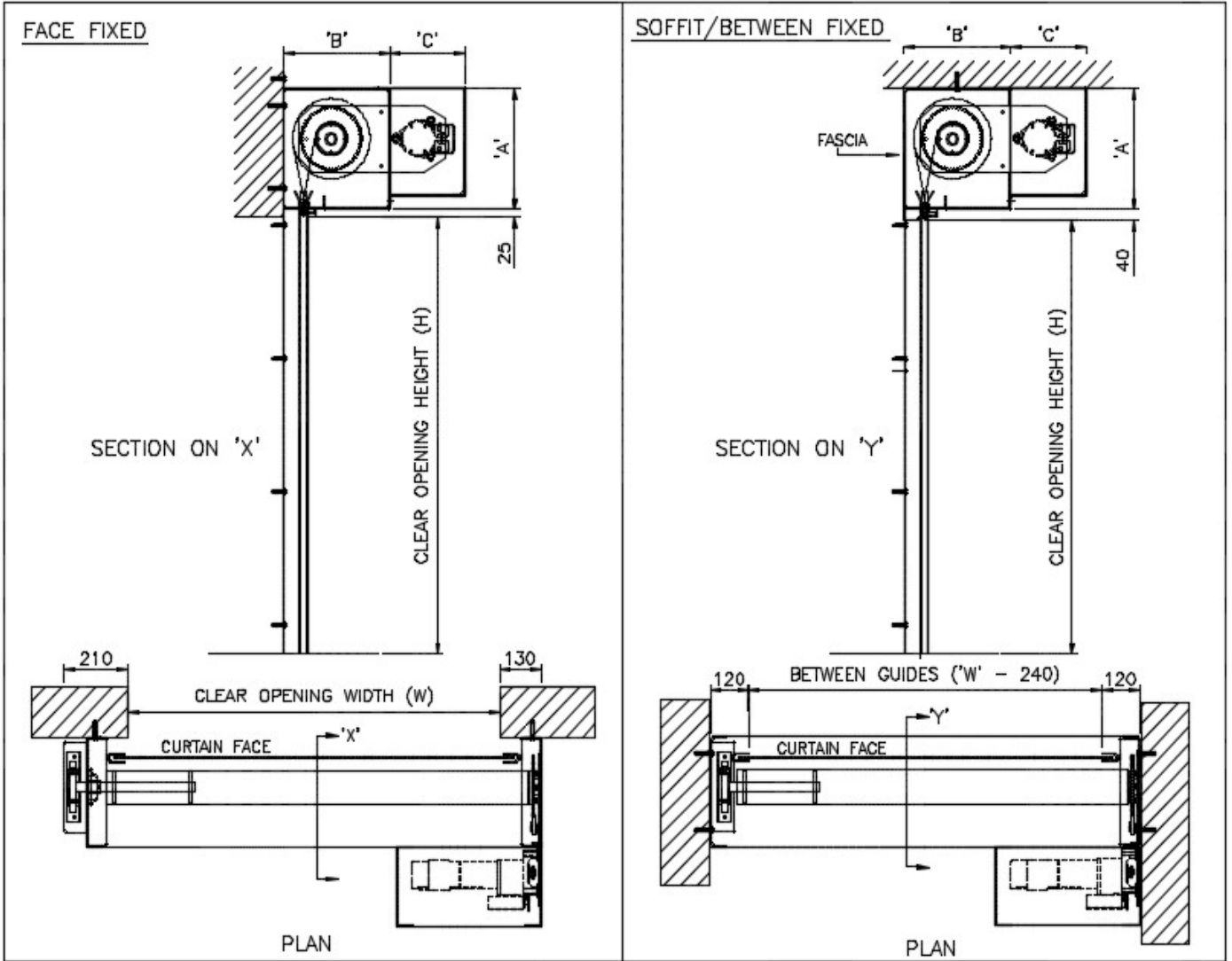
4000mm wide x 2500mm high

#### **WEIGHT**

Varies with opening size dependent on lath/barrel/casing requirements but approximately 50kgs/m<sup>2</sup>.

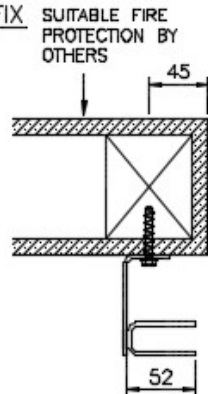
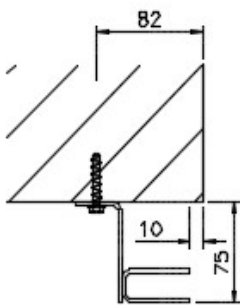
#### **OPTIONS**

- E30 and E120 fire ratings
- Audible and/or visual alarms
- Polyester powder coated finish to a range of standard RAL colours.
- Grade 304 or 316 stainless steel



CLEAR OPENING WIDTH (W) x HEIGHT (H)	'A'	'B'	'C'
UPTO 3000mm W x UPTO 2100mm H	290	260	280
UPTO 3000mm W x 2101-2500mm H	360	330	240
3001-4000mm W x UPTO 1500mm H	290	260	280
3001-4000mm W x 1501-2500mm H	360	330	280

**GUIDE DETAILS - FACE FIX**



**GUIDE & ENDPLATE DETAILS SOFFIT/BETWEEN FIX**

