

FIBREROLL

Rolling Fire Curtains

Bolton Gate Company, the acknowledged leader in the field of rolling fire door technology, introduces a much improved version of the Fibreroll rolling fire curtain, a product designed to overcome the restrictions of other types of fire doors.

The Fibreroll Rolling Fire Curtain has been successfully tested to BS 476 Part 22 for two hours fire resistance and assessed for oversized constructions.

The product offers major advantages over traditional steel shutters and other door types allowing building design new horizons in terms of fire compartmentation due to its low weight and headroom requirement.

Hundreds of buildings worldwide have benefitted from its inclusion as part of their fire protection and the product is unequalled for its ability to provide peace of mind whilst remaining unobtrusive in the ceiling.

STANDARD SPECIFICATION

Curtain

Specially reinforced and coated fibre-glass material which is designed to withstand temperatures in excess of 1000 degrees C.

Steel bobbins are attached to each end of the fabric to ensure that the curtain remains in the side guides even when subjected to differential pressures caused by fire.

The curtain thickness is approximately 0.7mm and the weight 650 grams per square metre.

A steel bottom rail is attached to provide rigidity and act as a weight to assist closure.

Guides

Manufactured from galvanized steel and formed into a slimline profile 100x 50mm which is prepared for bolting to the opening structure. Integral rebates are incorporated on which the bobbins engage in a fire situation.

Roller

The roller comprises a steel tube in which the tubular motor is fitted at one end and steel shafts / discs at the other. The roller is supported at each end on galvanized steel endplates with integral angles for fixing to the opening structure.

Casing

The roller is covered by a galvanized steel casing which also acts as a fire seal at the head.

OPERATION

Fibreroll fire curtains are electrically operated by 24 volt DC tubular motor and are supplied with a control panel which has a battery back-up and is connected (wiring by others) to a



normally-closed volt-free contact within the building's fire alarm panel. The standard control panel will operate one motor and a group panel supplied to operate up to six motors within the same fire compartmentation.

The system requires a 240 volt single phase fused spur within one metre of the control panel; the supply must be present prior to installation.

On receipt of the signal from the fire alarm panel, the curtains will fail-safe close by gravity and open automatically when the fire signal ceases.

In the event of power failure, the curtains will automatically close by gravity with a controlled descent.

FINISH

The curtain is self finished in grey with the side guides and roller casing galvanized as standard. The metalwork is also available in stainless steel or a polyester powder coated finish in a wide range of RAL colours.

MAXIMUM SIZES

30 metres wide x 8 metres high (subject to individual site circumstances).

OPERATING SPEED

Approximately 75mm per second

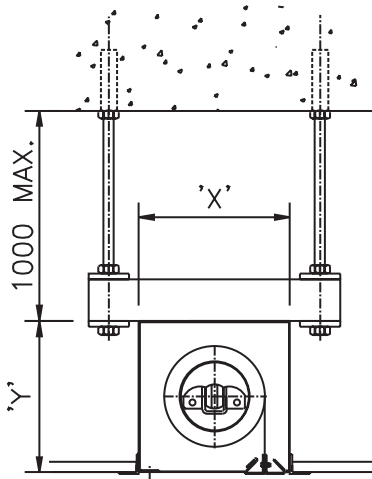
WEIGHT

Typically 30 kgs per linear metre of width for curtain, box and bottom rail.

FIBREROLL

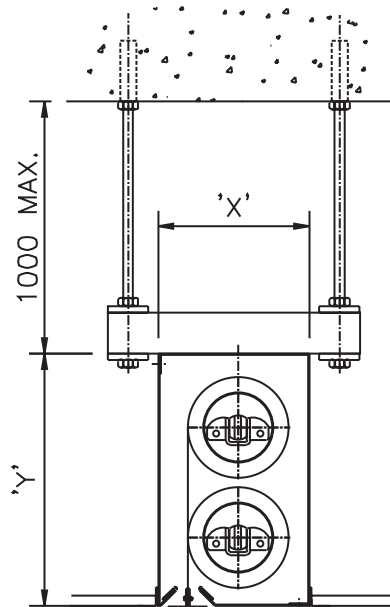
Rolling Fire Curtains

HEAD DETAILS



CURTAIN WIDTHS
UP TO 5500mm

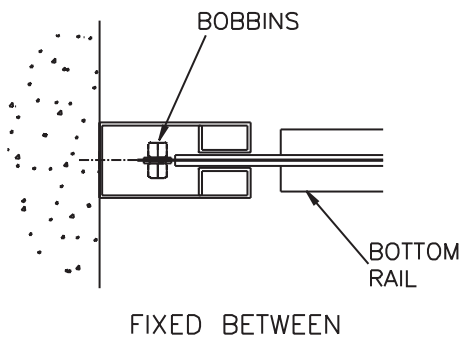
CLEAR HEIGHT	'X'	'Y'
up to 3000	180	180
3001 to 8000	210	210



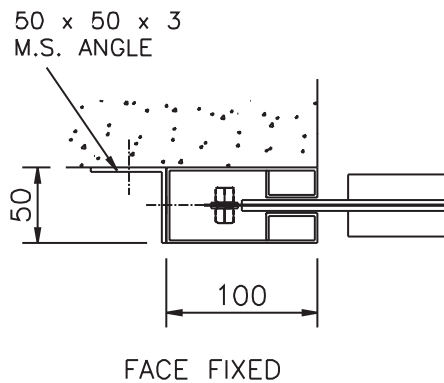
CURTAIN WIDTHS
OVER 5500mm

CLEAR HEIGHT	'X'	'Y'
up to 3000	180	290
3001 to 8000	210	390

SIDE GUIDE DETAILS



FIXED BETWEEN



FACE FIXED

ALL DIMENSIONS IN mm.