

FIREROLL A0 CLASS

Manually Operated Roller Shutters

Bolton Gate's new range of Fireroll A0 shutters has been developed with failsafe closure and safety in mind whilst maintaining a high aesthetic appearance and offering a solution to all manner of openings in fire rated bulkheads. The shutters are manufactured in the UK in accordance with the Company's ISO 9001 Quality System.

All shutters have been successfully tested to the latest IMO Resolution A.754 (18) and are approved by most of the leading Marine Authorities including Lloyds, American Bureau of Shipping, US Coast Guard and Bureau Veritas. All designs hold MED approval and are labelled with the relevant wheelmark.

The range is available in a choice of high quality decorative finishes from standard galvanised to polished stainless steel (grade 304 or 316) and an extensive range of polyester powder coated colours from the RAL range.

Manually operated shutters are ideal for smaller openings such as server counters, pizza ovens and grille stations or where the shutters require infrequent operation.

STANDARD SPECIFICATION

Operation

Manual push-up, pull-down operation is via lifting handles fitted to the bottom rail. Self-closing in a fire condition is achieved by activation of a fusible link when the local temperature exceeds 68 degrees C or interruption of a continuous fire signal to a 24 or 220 volt DC magnet. Larger shutters are fitted with a speed governor to control the rate of descent.

Curtain

Shutter curtains are constructed from continuously interlocking flat section galvanised steel laths 51mm high x 0.9mm thick securely held in place by endlocks.

Bottom Rail

The bottom rail is formed from a reinforced lath to give uniformity of appearance. A stainless steel nameplate is fitted stating the relevant approval body and the door reference for traceability purposes.

Side Guides

The shutter curtain runs in vertical guides which are fabricated from cold rolled galvanised steel channels 52 x 25mm with continuous steel angles, which are pre punched to ensure fixing



to the bulkhead at the correct centres. A secondary channel is incorporated in which the drop bar is engaged.

Roller

The roller is made from seamless steel tube of adequate diameter and wall thickness to avoid deflection and its solid steel shaft is supported in cups / bearings mounted on each endplate. A counterbalance spring is fitted within the roller and fine adjustment of tension is achieved by a ratchet / pawl mechanism fitted to the outside of one endplate.

Endplates

Fabricated from steel plate and prepared to accept the hood. Securely bolted to steel angles which are drilled for attachment to the bulkhead at the correct centres.

Hood

Constructed from galvanised steel and attached to the structure by setscrews.

MAXIMUM SIZES

Approved: 2620mm wide x 2290mm high

Recommended: 2620mm wide x 1500mm high

WEIGHT

Approximately 25kgs per m².

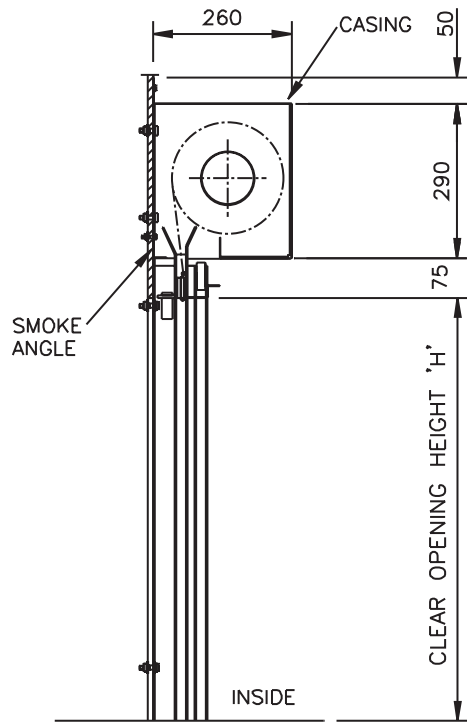
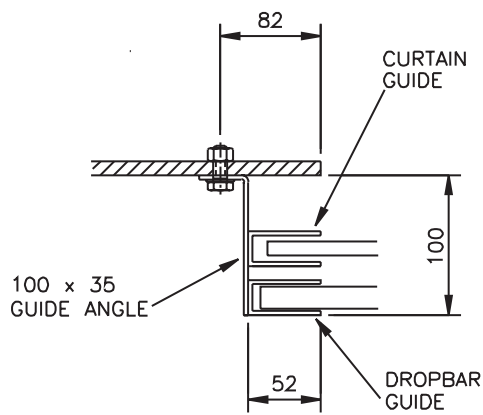
OPTIONS

- Polyester powder coated finish to a standard RAL colour.
- Grade 304 or 316 stainless steel construction.
- Holdback magnets (24 or 220 volt DC)
- Cylinder locking
- Proximity switch to signal fully closed status

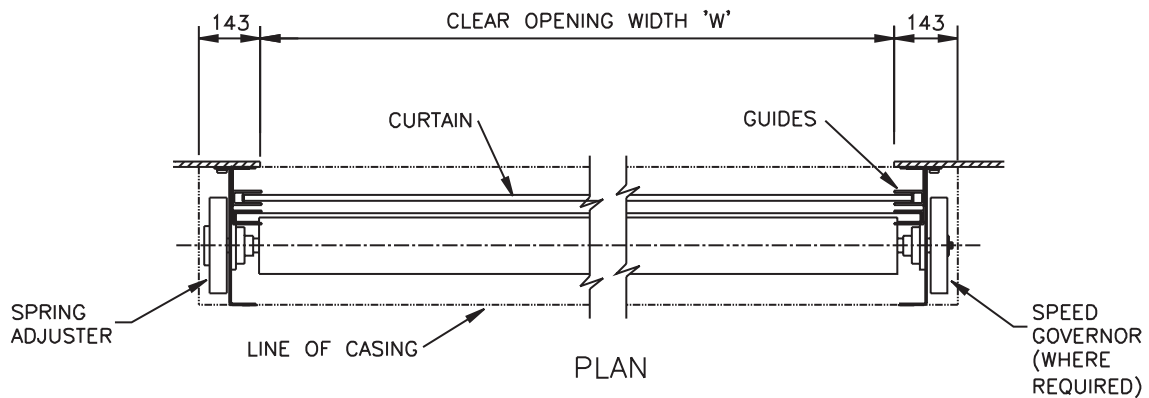
FIREROLL A0 CLASS

Manually Operated Roller Shutters

GUIDE DETAILS



SECTION



ALL DIMENSIONS IN MILLIMETRES