

FIREROLL AO CLASS

Electrically Operated Roller Shutters (External Motor)

Bolton Gate's new range of Fireroll AO shutters has been developed with failsafe closure and safety in mind whilst maintaining a high aesthetic appearance and offering a solution to all manner of openings in fire rated bulkheads. The shutters are manufactured in the UK in accordance with the Company's ISO 9001 Quality System.

All shutters have been successfully tested to the latest IMO Resolution A.754 (18) and are approved by most of the leading Marine Authorities including Lloyds, American Bureau of Shipping, US Coast Guard and Bureau Veritas. All designs hold MED approval and are labelled with the relevant wheelmark.

The range is available in a choice of high quality decorative finishes from standard galvanised to polished stainless steel (grade 304 or 316) and an extensive range of polyester powder coated colours from the RAL range.

Electrically operated shutters are ideally suited for use on a variety of openings where the opening size exceeds the maximum for manual shutters or where automatic operation is preferred by the client.

STANDARD SPECIFICATION

Operation

The shutter is electrically operated via a 230 volt single phase AC motor with an integral starter mounted on one endplate and is operated from an open/ close stop push button station at low level.

The shutter is electrically operated for everyday use but in the event of fire, the motor brake is released by either a fusible link or auto re-set 24 volt DC magnet and the shutter closes with a controlled rate of descent.

The standard system is pre-wired in our factory and merely requires plugging-in onboard.

In the event of power failure, the shutter can be opened by hand chain or closed by pull cord.

Curtain

Shutter curtains are constructed from continuously interlocking flat section galvanised steel laths 51mm high x 0.9mm thick up to 4000mm wide and curved section laths 76mm high x 0.9mm thick up to 7000mm wide with both types being securely held in place by endlocks.

Bottom Rail

Flat lath shutters' bottom rail is formed from a reinforced lath



and curved section curtains having an inverted tee section.

A stainless steel nameplate is fitted stating the relevant approval body and the door reference for traceability purposes.

Side Guides

The shutter curtain runs in vertical guides which are fabricated from cold rolled galvanised steel channels with continuous steel angles, which are pre punched to ensure fixing to the bulkhead at the correct centres.

Roller

The roller is made from seamless steel tube of adequate diameter and wall thickness to avoid deflection and its solid steel shaft is supported in bearings mounted on each endplate.

Endplates

Fabricated from steel plate and prepared to accept the hood. Securely bolted to steel angles which are drilled for attachment to the bulkhead at the correct centres.

Hood

Constructed from galvanised steel and attached to the structure by setscrews.

MAXIMUM SIZES

MED/BV: 7000mm wide x 4000mm high

WEIGHT

Approximately 50kgs per m².

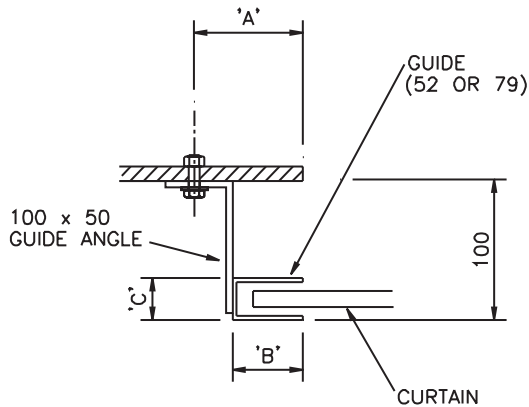
OPTIONS

- Polyester powder coated finish to a standard RAL colour.
- Grade 304 or 316 stainless steel construction.
- Proximity switch to signal fully closed status.
- Holdback magnets (24 or 220 volt DC)

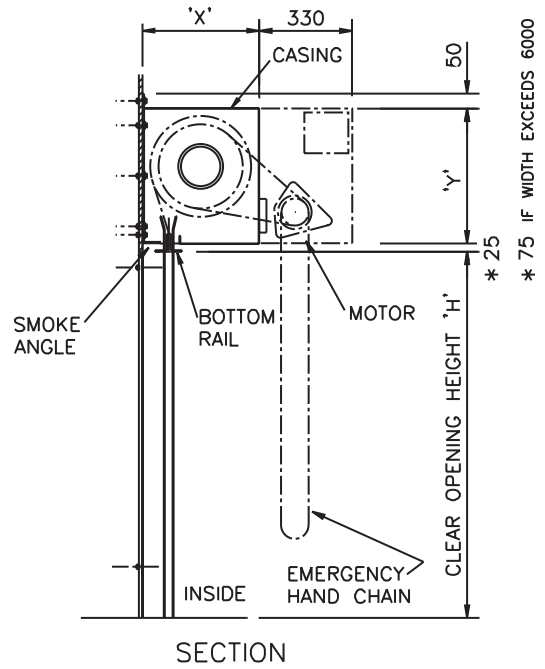
FIREROLL A0 CLASS

Electrically Operated Roller Shutters (External Motor)

GUIDE DETAILS

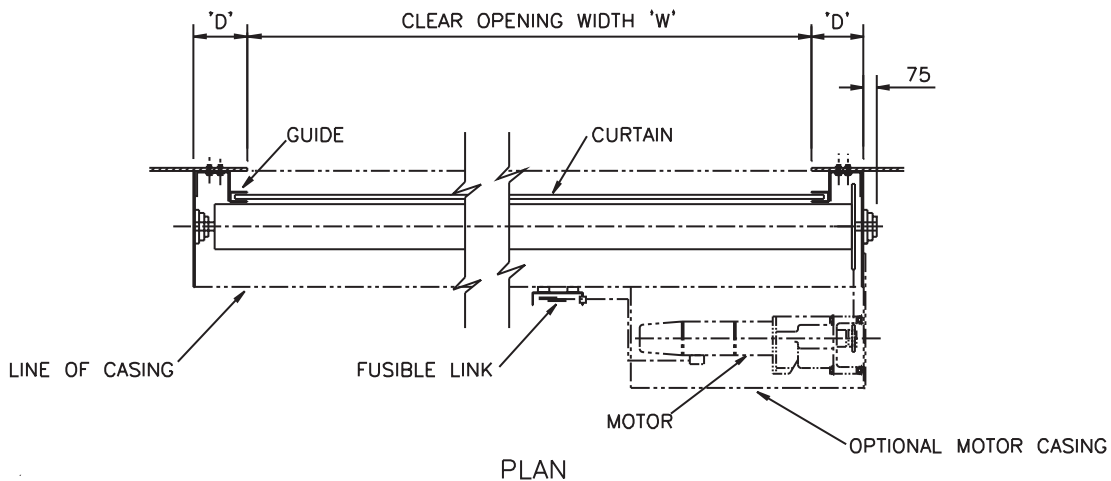


CLEAR OPENING WIDTH 'W'	'A'	'B'	'C'
UP TO 5000	82	52	25
5001 TO 7000	109	79	30



CLEAR OPENING WIDTH 'W'	'D'
UP TO 5000	160
5001 TO 7000	205

CLEAR OPENING HEIGHT 'h'	'x'	'y'
UP TO 2100	260	290
2101 TO 4000	400	370



ALL DIMENSIONS IN MILLIMETRES